

JET MILLS

气流粉碎机



研发
R&D



生产
Production



销售
Sales



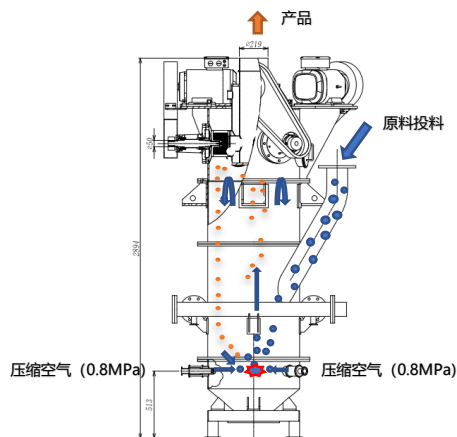
售后
After sales



设备原理 Equipment principle

材料通过使用相反的流体相互碰撞而被粉碎
产品的颗粒粒度可超细粉碎至几微米水平
由于其结构能防止机械磨损,
该粉碎机适用于批量大粉碎和高磨损性材料
高速喷射流由空气压缩机产生 (0.8MPa)

The material is crushed by using opposite fluids to collide with each other.
The particles of the product are superfine crushed to the level of several microns.
Because its structure can prevent mechanical wear,
the crusher is suitable for mass crushing and high wear materials.
High speed jet flow is generated by air compressor. (0.8MPa)



【应用领域】

磷酸铁锂 三元 石墨 焦炭 电容器 封装材料 氧化铝 氧化锆 硅石 活性炭 树脂
玻璃 电子材料 导电材料 磁性材料 碳酸钙 氧化锡 医药品 草药 农药
金属合金 健康食品 食品添加剂 研磨剂 颜料 二次团聚物的破碎和分级

【Applications】

Lithium iron phosphate Ternary Graphite Coke Capacitor Packaging material
Alumina Zirconia Silica Activated carbon Resin Glass Electronic materials
Conductive materials Magnetic materials Calcium Carbonate tin oxide Medicine
Herbal Pesticides Metal alloy Health Food Food additive Grinding agent Pigment
Crushing and classification of secondary agglomerates

设备名：气流粉碎机

用途：原材料超细粉碎用

型号：XRJ-410 XRJ-610 XRJ-640 XRJ-830 XRJ-940

Equipment name : Jet Mills

Use : For superfine grinding of raw materials

Model : XRJ-410 XRJ-610 XRJ-640 XRJ-830 XRJ-940

设备结构 Equipment structure

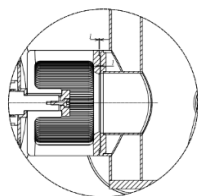
结构介绍

Structure introduction

高效的粉碎部件和内置的高性能分级轮
确保了超细粉碎而不会过粉碎

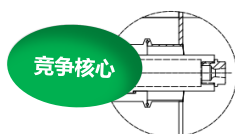
Efficient crushing parts and built-in high-performance classification rotor.

Ensures ultra-fine grinding without over grinding.



分级轮

Grading wheel



竞争核心

喷嘴
Nozzle



XRJ-640



XRJ-830

型号 Model		XRJ-410	XRJ-610	XRJ-640	XRJ-830	XRJ-940
分级轮尺寸 Grading wheel size		Ø 200mm	Ø 200mm	Ø 110mm	Ø 200mm	Ø 315mm
分级轮数量 Number of grading wheels		1件	1件	4件	3件	4件
压缩机动力 Compressor power		100kW	120kW	130kW	250kW	300kW
喷嘴的数量 Number of nozzles		4件	4件	4件	4件	4件
使用空气量 Amount of air used		16Nm ³ /min	18Nm ³ /min	20Nm ³ /min	50Nm ³ /min	60m ³ /min
设备重量 Weight of equipment		1,200kg	1,200kg	1,800kg	2,700kg	3,000kg



设备特点 Equipment features

新型研究开发多类型分级轮！

New research and development of multi type classification rotor !

通过安装在顶部的分级轮进行分级

因为没有粗粉飞到细粉一侧所以有更清晰的粒径分布

Grading by classification rotor installed on the top.

Because there is no coarse powder flying to the side of fine powder therefore, there is a clearer particle size distribution.

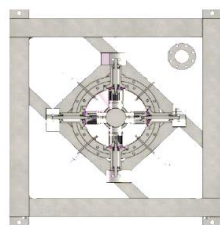
分级轮的间隙可以调整

多类型分极轮针对比重轻的物料特别有效！如磷酸铁锂

The clearance of classification rotor can be adjusted.

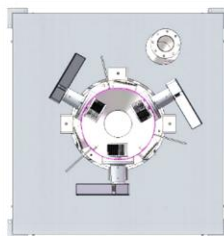
Multi-type classifying rotor is effective for materials with light specific gravity.

For example, lithium iron phosphate.



XRJ-640 4类型分级轮

4 types of classification rotor



XRJ-830 3类型分级轮

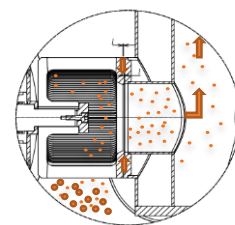
3 types of classification rotor

多类型分级轮的分类效果

气流粉碎机的尺寸可以大减少！

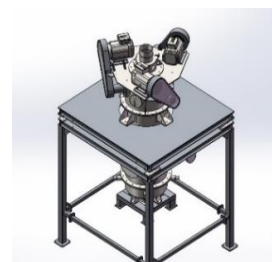
Classification effect by multi-type classifying rotor.

The size of air mill can be greatly reduced !



分极轮轴空气密封

Classifying rotor shaft air seal



设备优势 Advantage of equipment

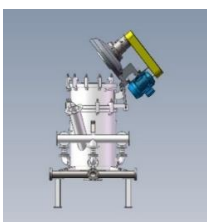
与传统的气流粉碎机相比节省高达40%的电费！

Up to 40% less electricity than traditional air mill!

Topics

新型气流粉碎机

New airflow mill



高温型气流粉碎机 HTT系列

High temperature type HTT series



XRJ-910HTT

保护全球环境！
当然也是为了节省成本！

To protect the global environment!
And of course to save costs!



超越常规的耐热设计！

Beyond the conventional heat-resistant design !

传统的气流粉碎机的耐热性为60℃

我司高温型气流粉碎机的耐热性为120℃

The heat resistance of traditional air mill is 60 °C.

The heat resistance of our high temperature type air mill is 120°C.



其他公司不具备的优点和特长
Advantages and specialties that other companies do not have.

高温型气流粉碎机的主要优点

与传统的气流粉碎机相比，

使用高温压缩气体

可以减少接近40%的能源消耗！

The main advantages of high-temperature type Airflow Mill

Compared to conventional airflow mill, Using high temperature compressed gas can reduce energy consumption by nearly 40%!

出色的可维护性！

Outstanding maintainability !



空气喷嘴夹钳固定

Air nozzle clamp fixing

非常方便维修！

Maintenance is very convenient.



异物混入防止对策 Measures to prevent contamination

可以实现无金属污染的设计!

It can realize the design without metal pollution.



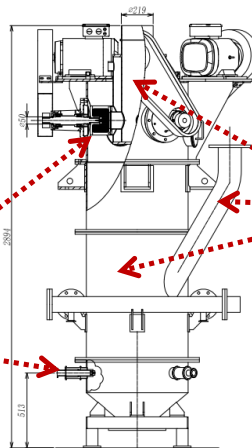
内衬氧化铝

Inner liner made of alumina



陶瓷分级轮

Ceramic classifying rotor



腔体内部、进出口可做
陶瓷内衬或溶射碳化钨处理

Ceramics are used in the chamber of crushing
nozzle and classification rotor ,
the inlet and outlet can be used as ceramic lining or
solution tungsten carbide treatment.

陶瓷用于粉碎喷嘴和分级轮

Ceramics are used for crushing
nozzles and classification rotor.

课题研究 Topics

要求 想尽可能地控制电力运行费用

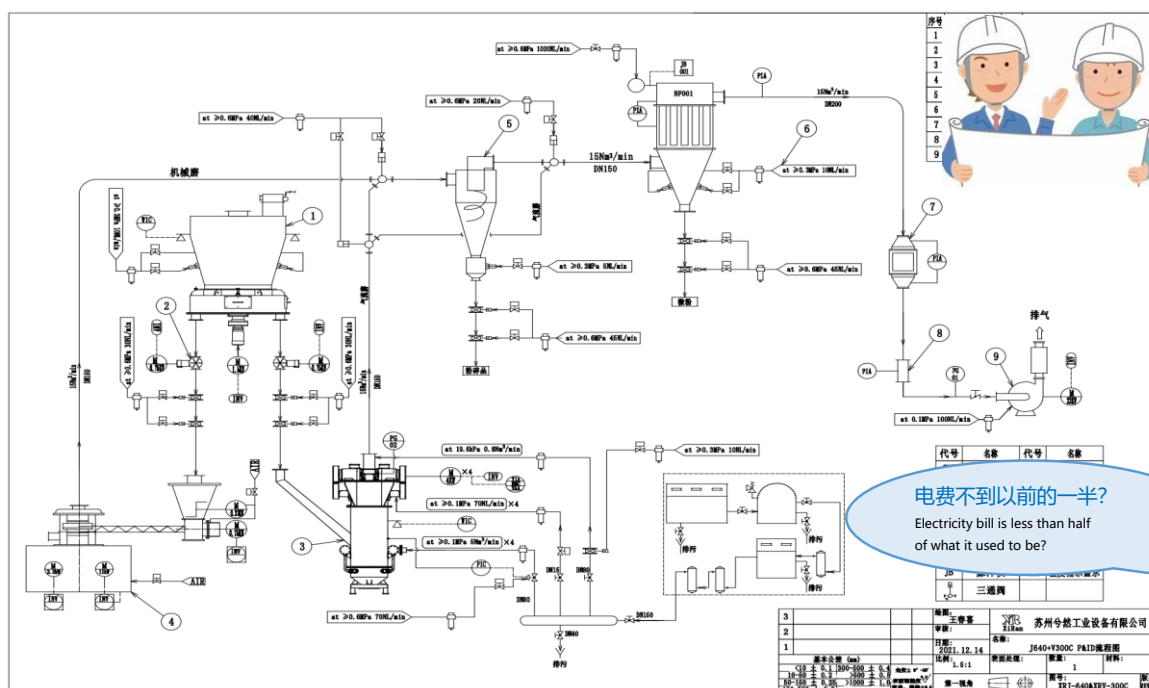
Problem Want to control electricity costs for running costs.

新开发!

New Development !

气流粉碎机/机械粉碎机切换线

Jet mills/Mechanical pulverizer switching line



电费不到以前的一半?

Electricity bill is less than half
of what it used to be?

氮气发生器和脱碳器切换线也可
有氢氧化锂和磷酸铁锂两种类型

Nitrogen generator and decarburizer switching lines are also available.

Two types of lithium hydroxide and lithium iron phosphate are available.

重量・内部压力・电机转速・机器的振动和温度，有各种各样的传感器！

Weight, Internal pressure, Motor speed, Vibration and Temperature of the machine, there are various sensors !

通过在本体中安装称重传感器

对供应量的控制

可以检查里面的剩余量和附着力

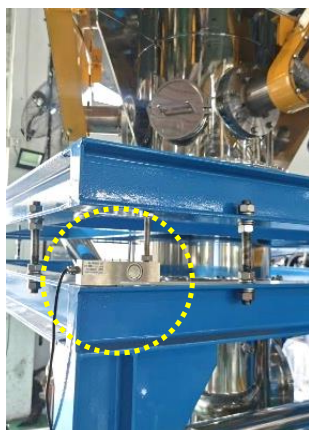
整个系统的控制得到加强，实现了稳定运行

Equipped with a weight sensor on the body. Control of supply.

You can check the remaining amount and adhesion inside.

The control of the whole system has been strengthened

and stable operation has been achieved.



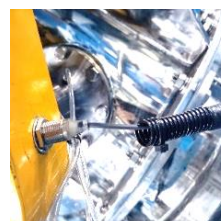
称重传感器

Weight sensor



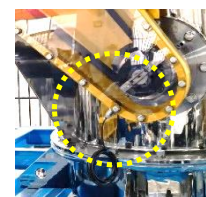
内部压力传感器

Internal pressure sensor



电机转速传感器

Motor speed sensor



试验案例 Experimental cases

多类型分级轮的竞争力

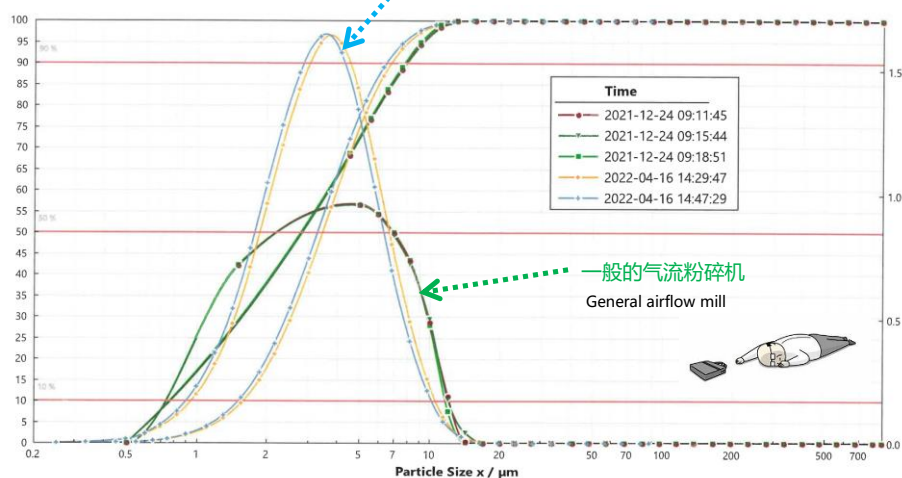
Competitiveness of Multi-Type Classification Rotors



XRJ-830

今然公司粉碎样品的粒径

The particle size of our company crushed samples



一般的气流粉碎机
General airflow mill

实现了尖锐的粒度分布！

Sharp particle size distribution!





高新技术企业
High-tech enterprise



高新技术产品认定
High-tech product identification



中国科学院苏州纳米研究所产学研基地
Suzhou Institute of Nanotechnology, Chinese Academy of Sciences, Designation of Joint Research Centers



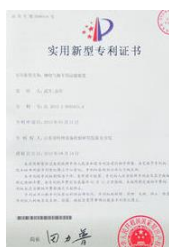
中南大学合作设立博士生工作站
Collaboration with Central South University to establish a doctoral internship ship



ISO9001认证
ISO9001 certification



ISO14001认证
ISO14001 certification



专利证书
Patent certificate

兮然科技(江苏)有限公司
XiRan XiRan Technology (Jiangsu) Co., Ltd.

总公司 Headquarters

地址：江苏省苏州市苏州工业园区春辉路1号
电话：0512-6285-6578
邮箱：xiran_china@126.com
网址：www.sz-xiran.com

苏州第一工厂 Suzhou first factory

地址：江苏省苏州市苏州工业园区春辉路1号
电话：0512-6285-6578

苏州第二工厂 Suzhou second factory

地址：江苏省苏州市苏州工业园区双泾街5号
电话：0512-6726-2228

广东事务所 Guangdong branch office

地址：广东省惠州市惠城区演达大道16号 云天华庭24F
电话：152-6240-3353
邮箱：linliyu@sz-xiran.com

东京事务所 Tokyo branch office

地址：日本国东京都千代田区丸之内2-2-1 岸本大厦7F 721室
电话：152-5041-4774
邮箱：makino@sz-xiran.com



欧洲CE认证
CE certification in Europe



韩国KCs认证
KCs certification in Korea



进出口业务许可证
License of import and export business



防爆设备安装认证
Explosion-proof equipment installation certification



防爆设备维护认证
Explosion-proof equipment maintenance certification

锂电设备 粉体机器

